

NM Urban Heat Cohort: Heat Season Summary

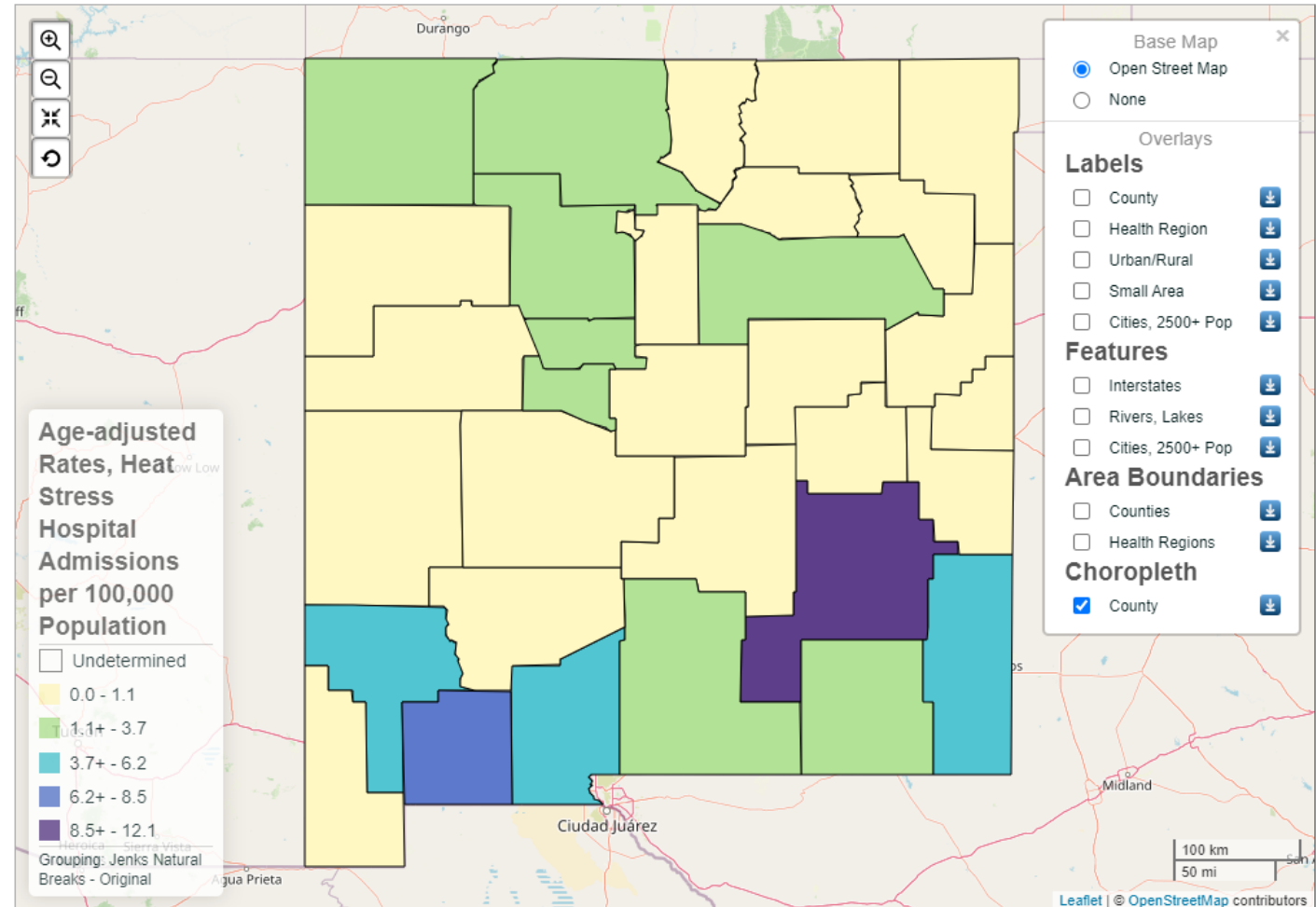
Chelsea Eastman Langer, PhD, MPH

chelsea.langer@doh.nm.gov

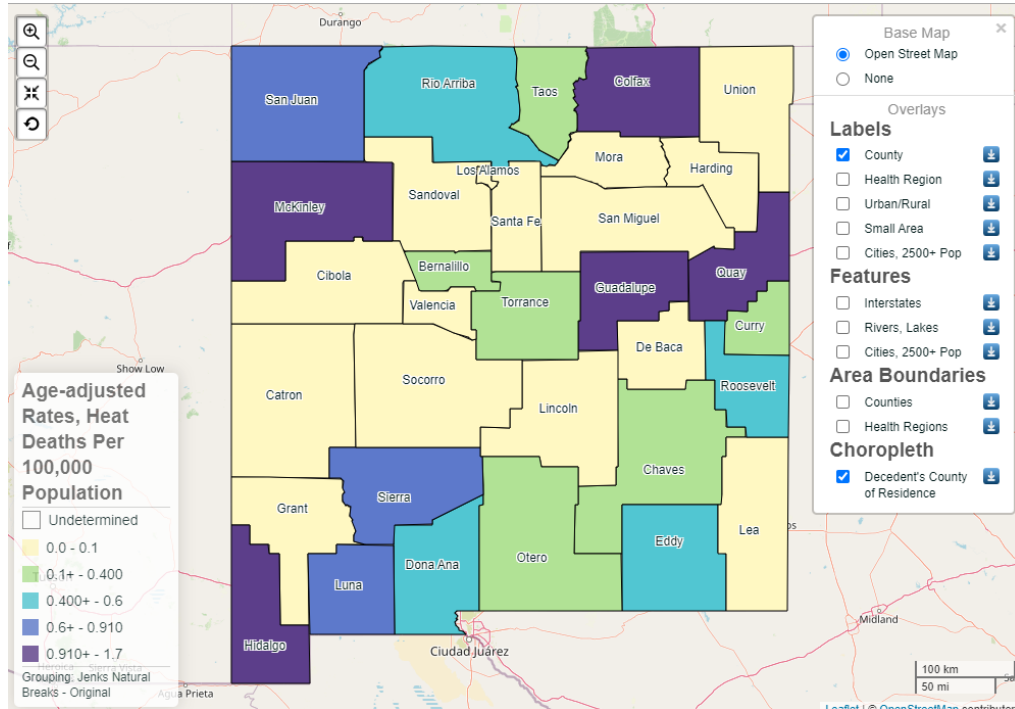
September 26, 2023

NMTracking.doh.nm.gov

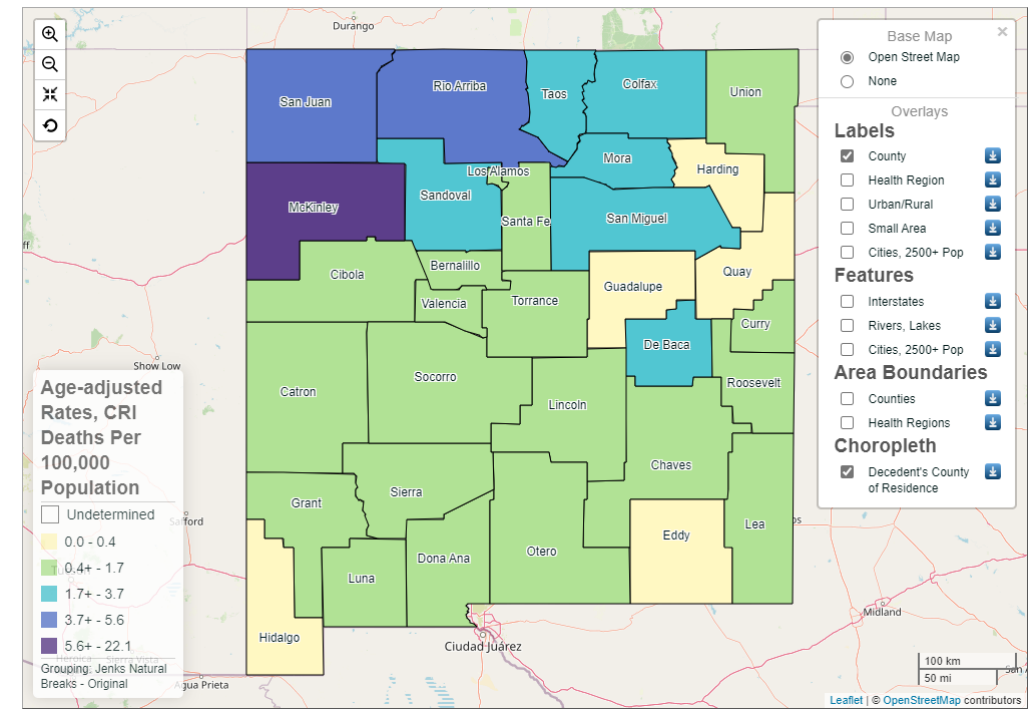
- HRI Content Page
 - What is HRI?
 - How to recognize and treat HRI
 - Who is at risk?
 - Health tips
 - Downloads and resources
- Queries
 - ED Visits
 - Hospitalizations
 - Deaths
- Indicator Reports
 - ED Visits
 - Hospitalizations



Heat- and Cold-Related Deaths in NM 2013-2021



HRI Count = 81

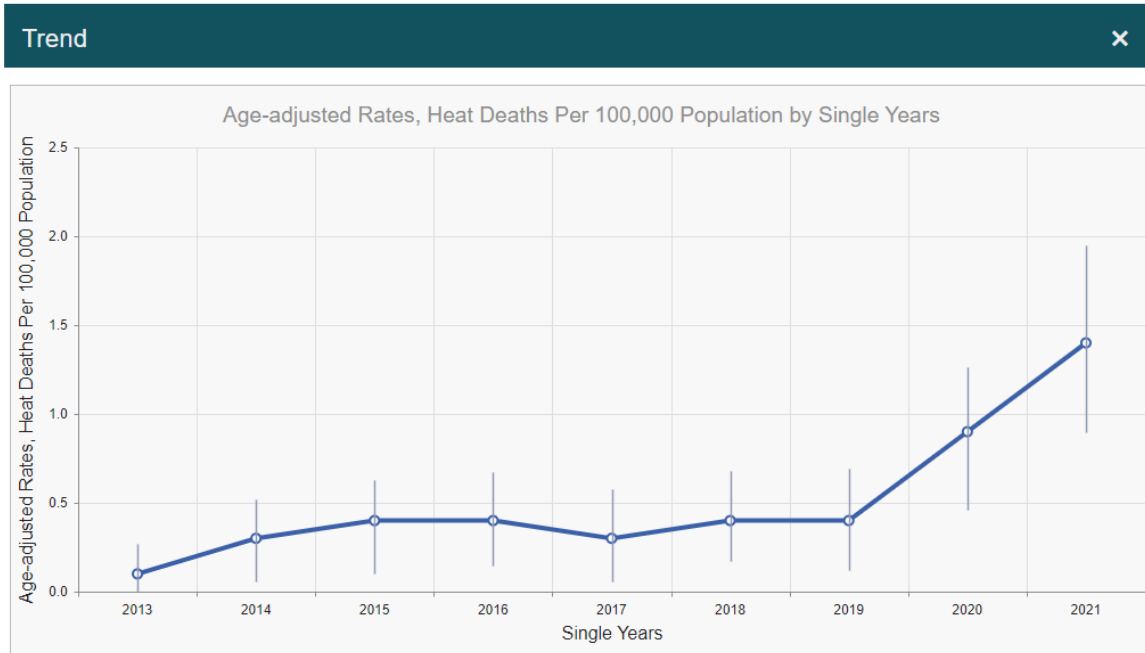


CRI Count = 434

Trends in Heat- and Cold-Related Deaths

Heat-related deaths

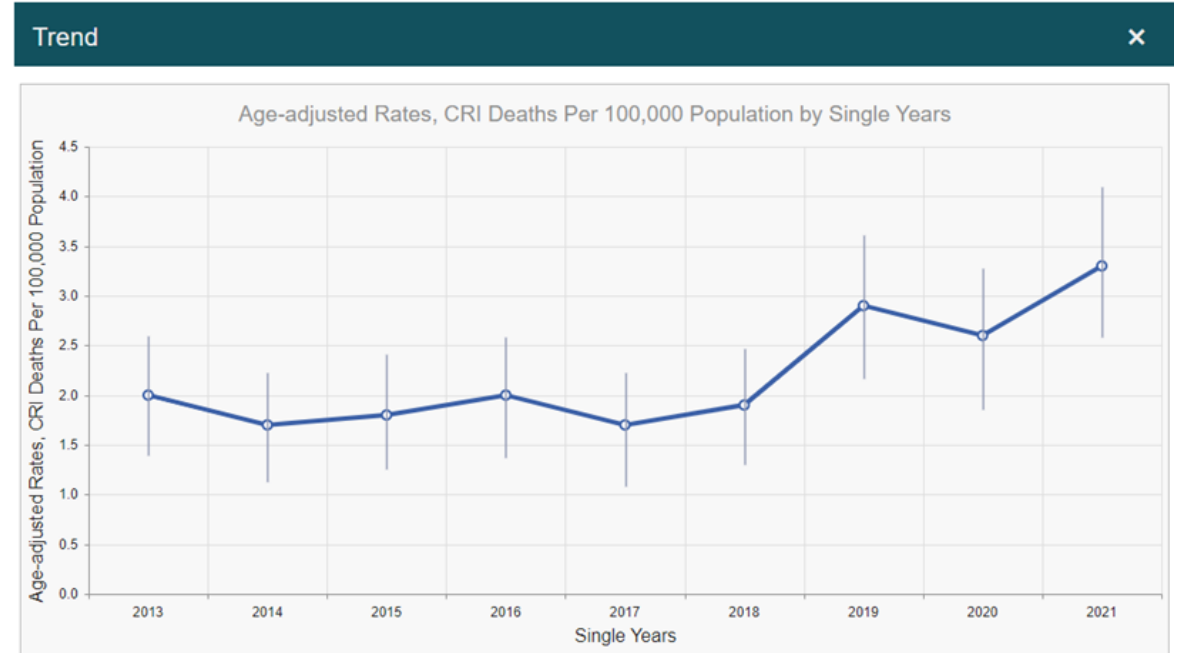
Age-adjusted rates 2013-2021



Deaths occur around the state.
10x rate of deaths in 2021 compared to 2013.

Cold-related deaths

Age-adjusted rates 2013-2021



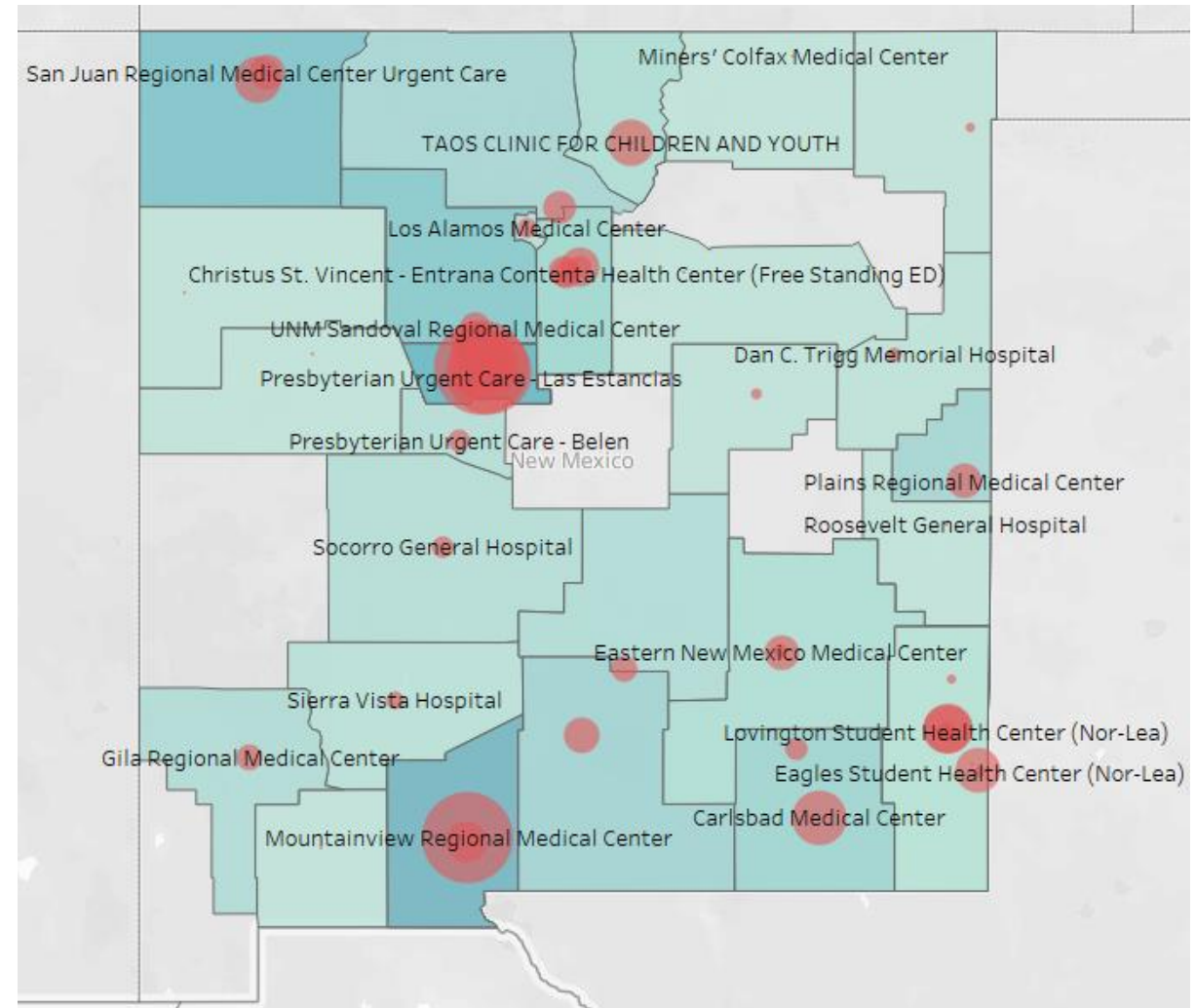
Deaths mostly occur in northern NM.
Double the rate of deaths in 2021 compared to 2013.

National Syndromic Surveillance Program (NSSP)

- SyS originally developed in early 2000s in DC Metro area
- Response to bioterrorism threats
- Identify potential bioterrorism cases
 - Diagnosis may be delayed
 - ESSENCE designed to capture near real-time ED data
 - Users can monitor data for clusters of similar symptoms (syndromes)

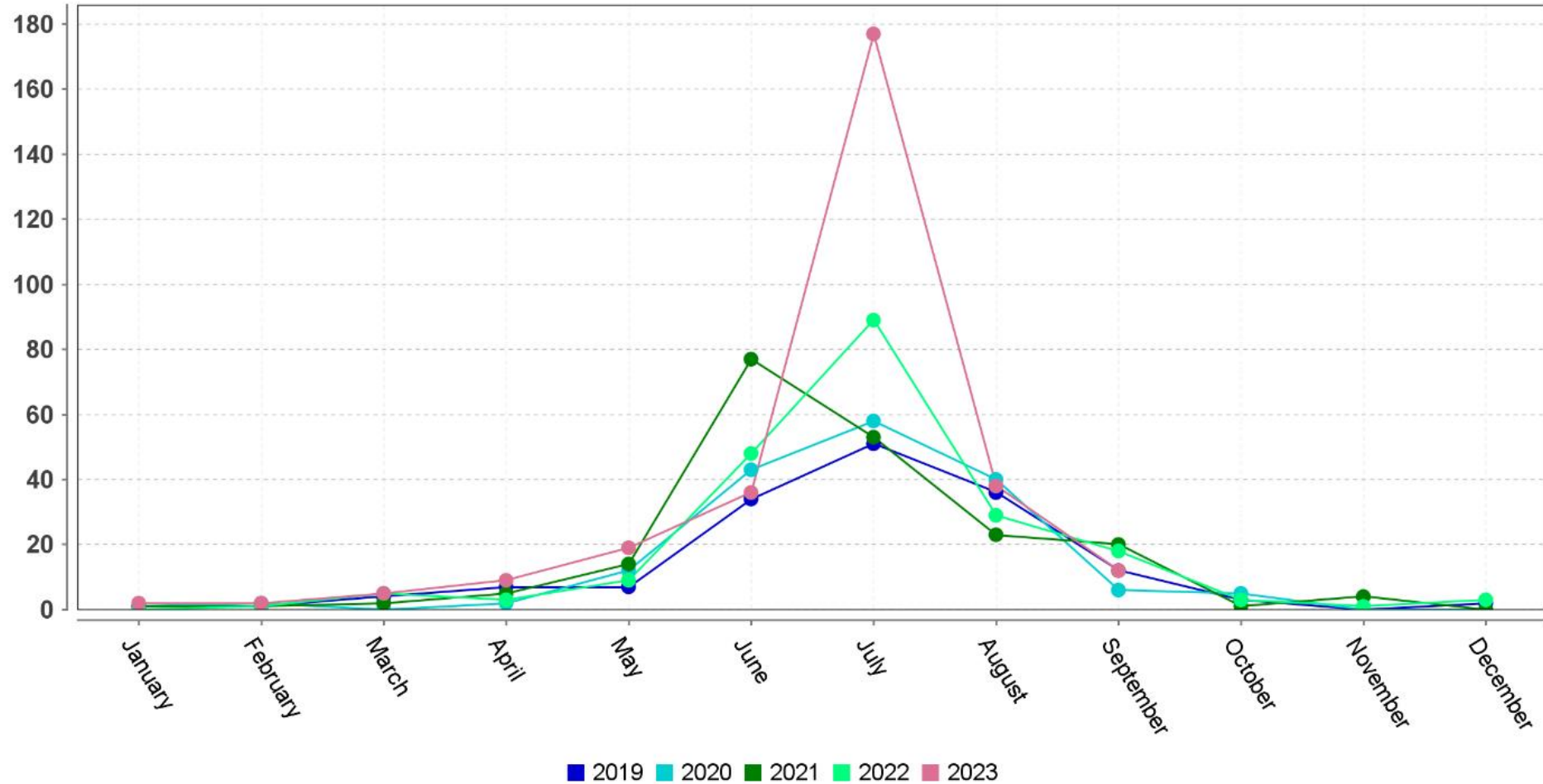
NSSP in NM

- 37 EDs in NM report; 32 consistently (84-98% coverage)
 - 100% coverage in Albuquerque
- Receives first chief complaints data within 24 hours of patient arrival
- Record usually complete within a week (depending on hospital stay)
- Does NOT include IHS or VA



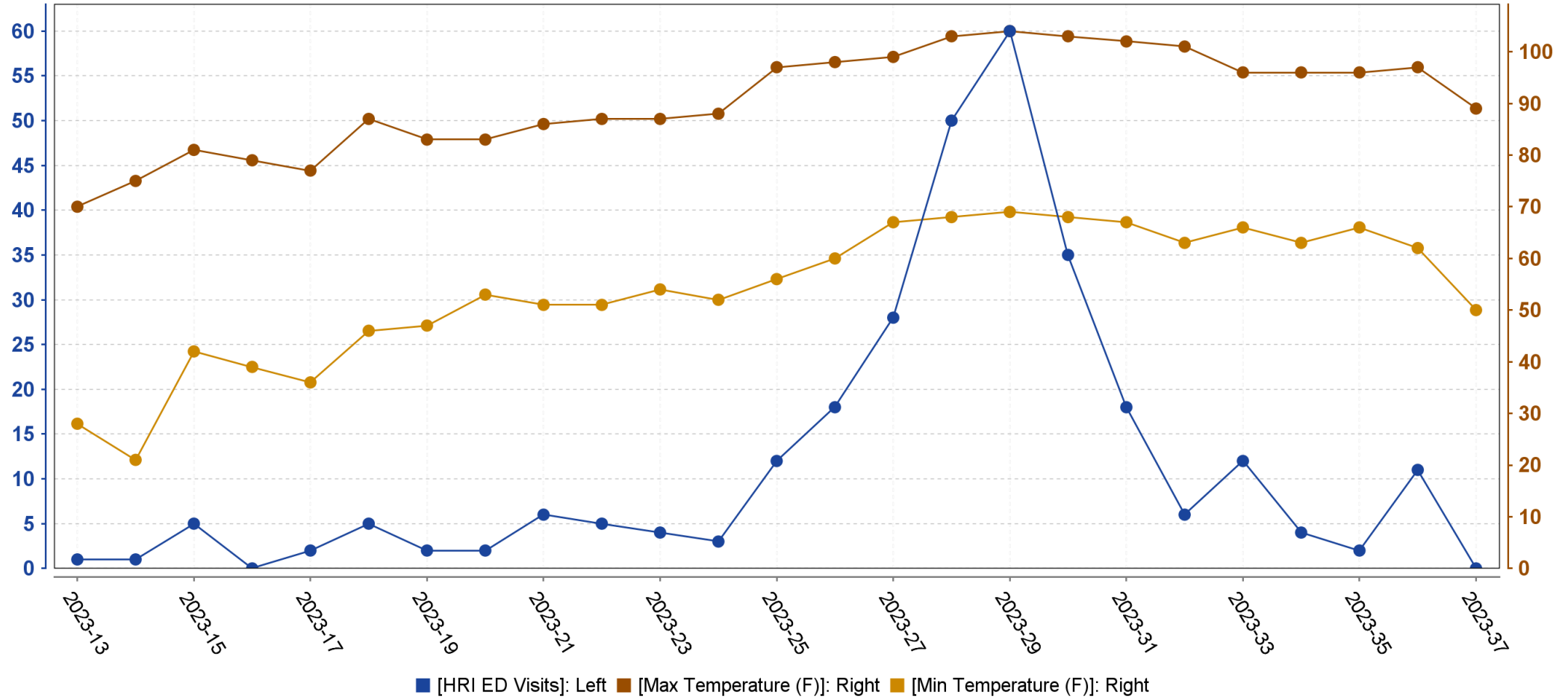
HRI Surveillance (NSSP)

Monthly HRI ED Visits, 2019-2023



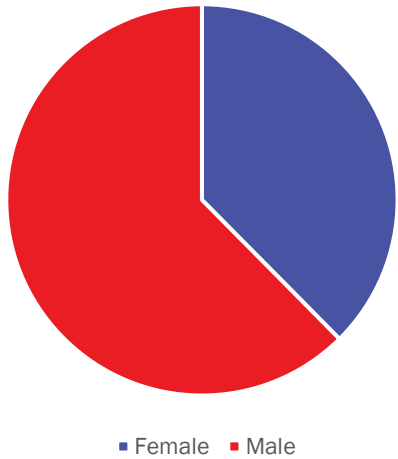
April 1 – September 17, 2023: 291 heat-related ED visits in ABQ (NSSP)

HRI ED Visits with Temperatures

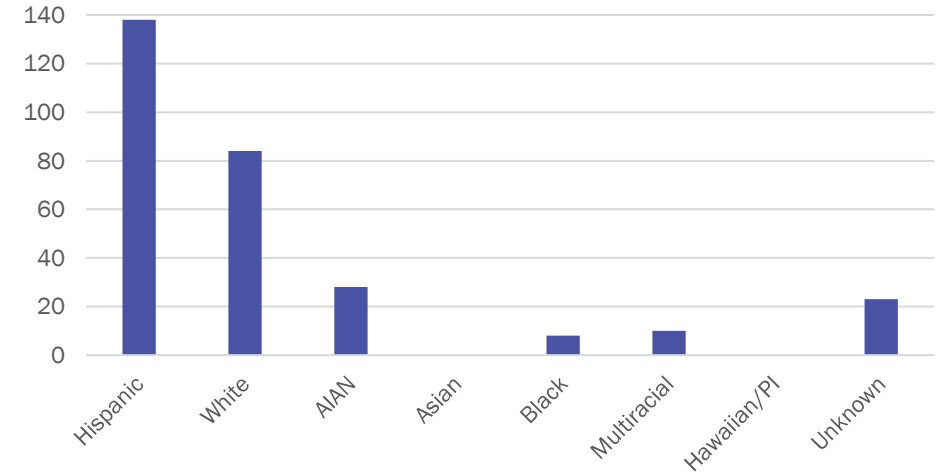


HRI Demographics - NSSP

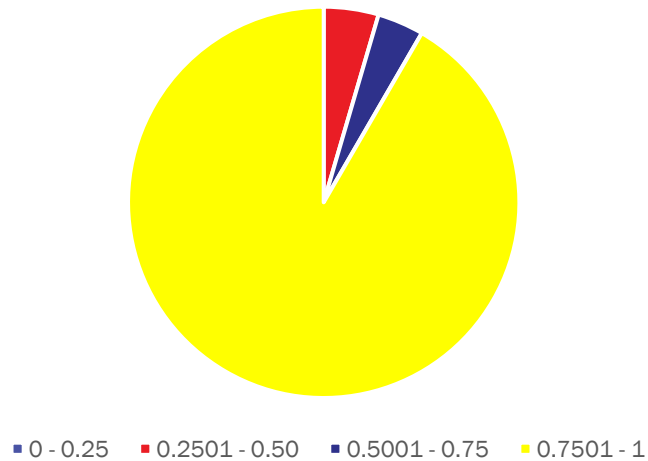
HRI ED Visits by Sex



HRI ED Visits by Race/Ethnicity



HRI ED Visits by SVI Status

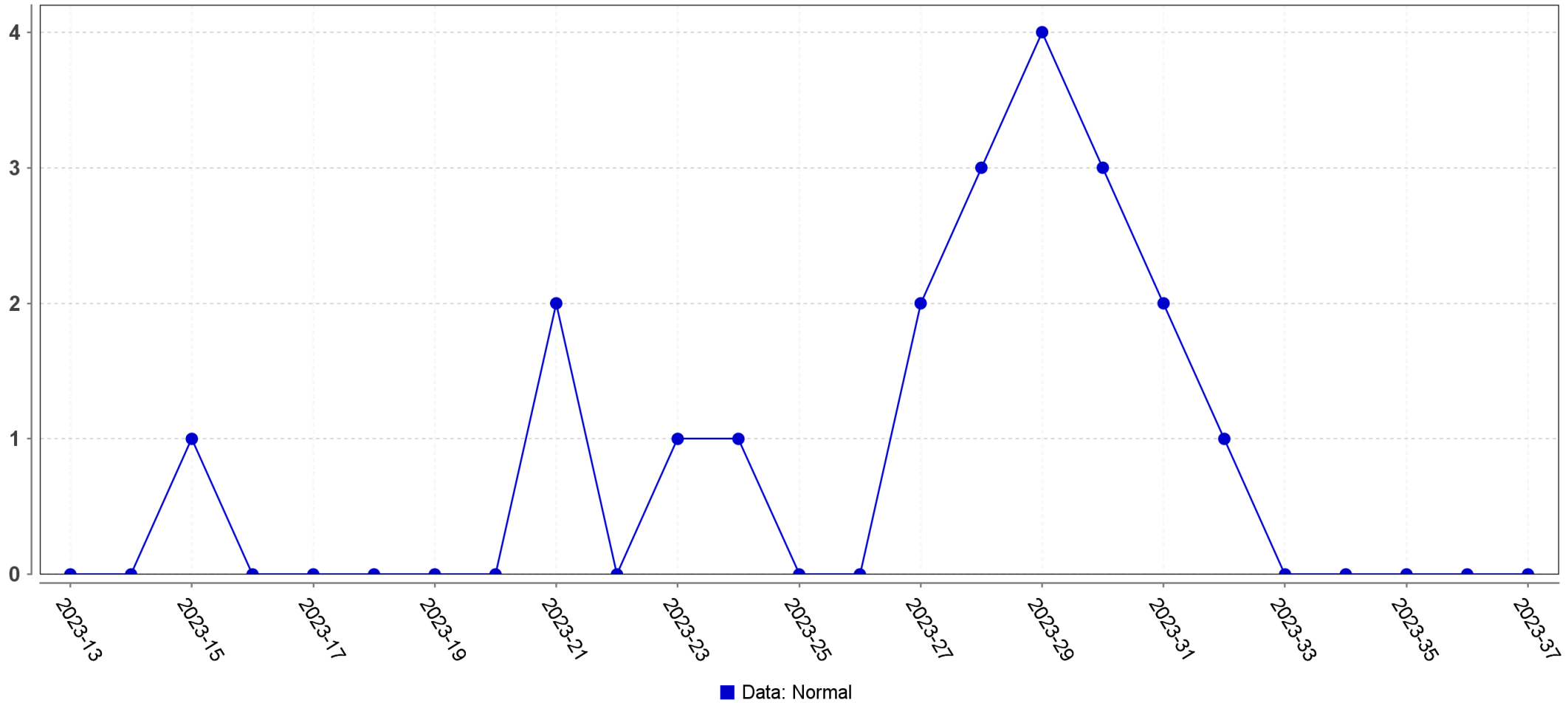


Other Findings in Syndromic Surveillance

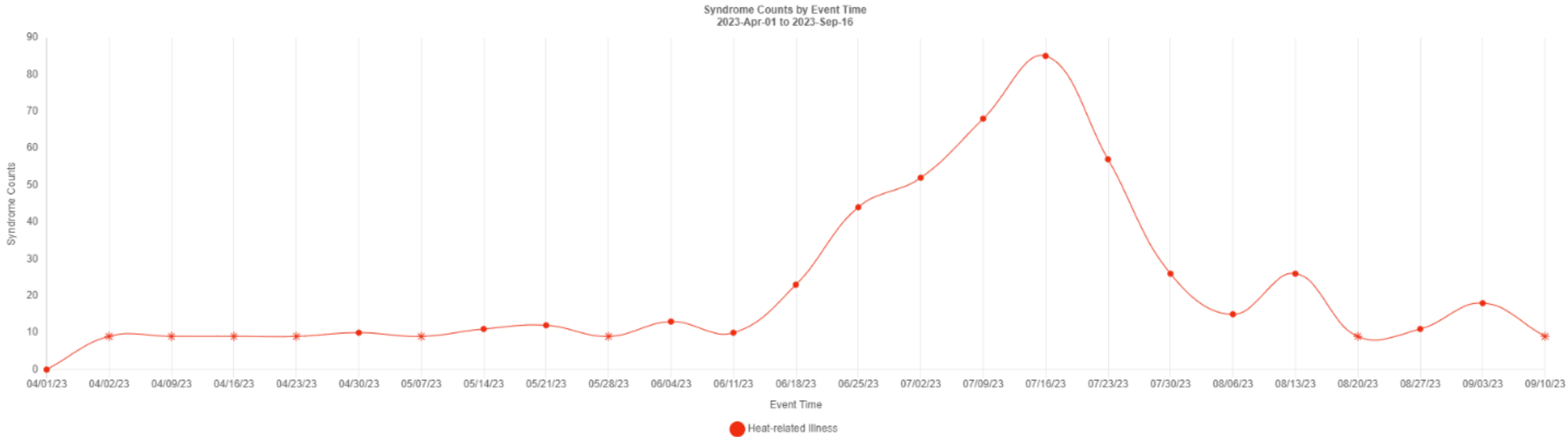
- 15% outdoor workers
- 9% homeless
- 5% out of state
- 4% recreation
- 3% no AC at home
- 2% yard work
- 20% blank / unknown circumstances

Urgent Cares (NSSP)

Weekly HRI ED Visits in ABQ Urgent Cares



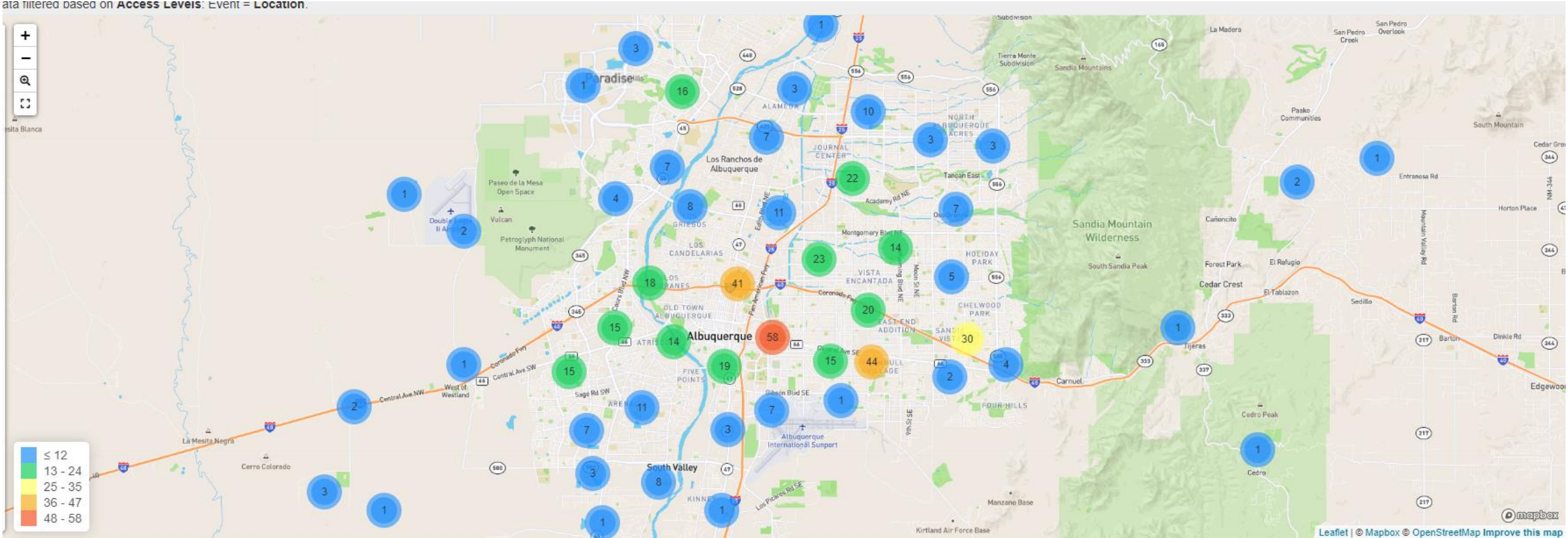
Biospatial – EMS



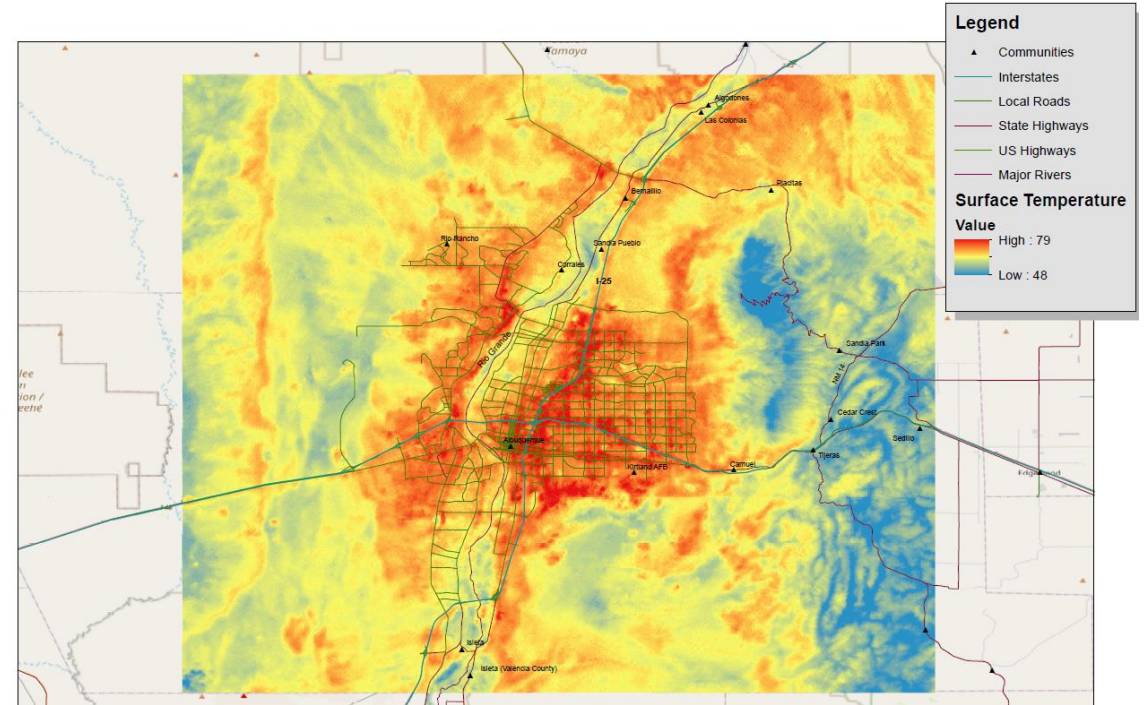
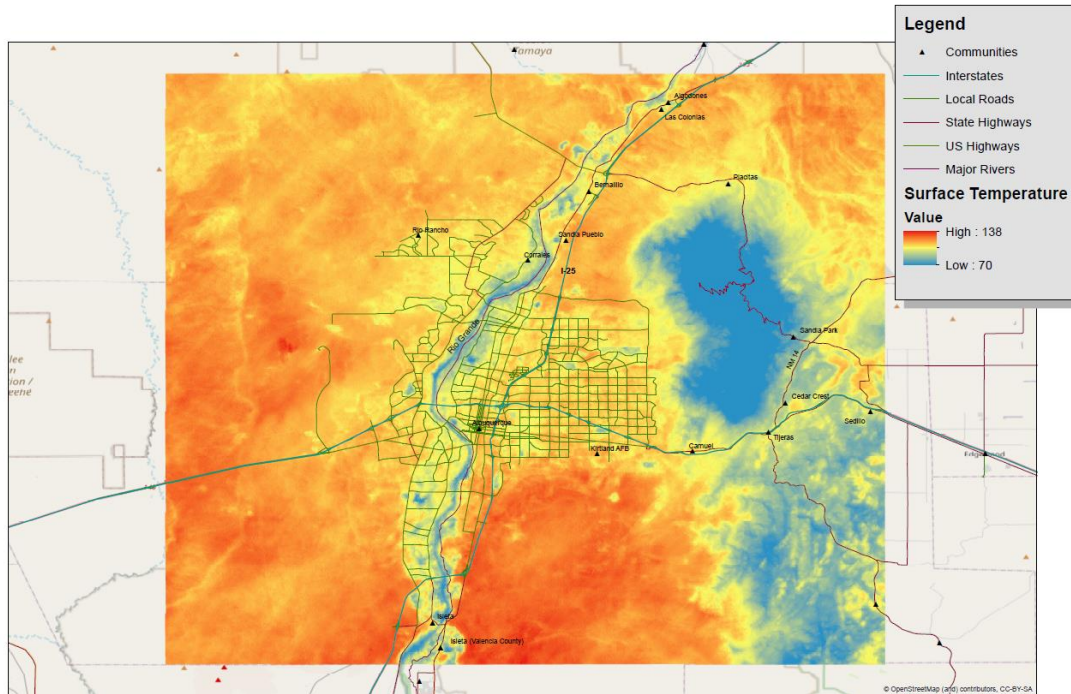
520 EMS calls for Bernalillo County, April 1 – September 16

Biospatial – EMS

Data filtered based on Access Levels: EVENT = LOCATION.



Urban Heat Map (NASA HAQAST)



Acknowledgement

Funding for this presentation was made possible (in part) by the Centers for Disease Control and Prevention. The views expressed in written conference materials or publications and by speakers and moderators do not necessarily reflect the official policies of the Department of Health and Human Services, nor does the mention of trade names, commercial practices, or organizations imply endorsement by the U.S. Government.

Thank you!

NM EPHT

Srikanth Paladugu, Principal Investigator

Stephanie Moraga-McHaley, Program Manager

Renee Volker-Rector, Program Coordinator

Brian Woods, Epidemiologist

Colin Hawkinson, CSTE AEF

Any questions?

Chelsea Langer

(505) 819-9066

Chelsea.Langer@doh.nm.gov

<https://nmtracking.doh.nm.gov/>